



SCT 140/80

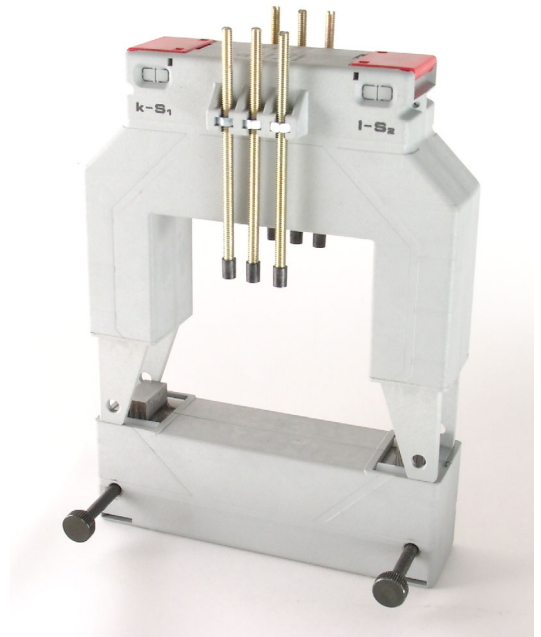
For currents from 400 A to 1600 A

Type: split core

Standards: acc. to BS 3938, EN 60044-1 and DIN 42600

Technical data:

- Class of accuracy:** 1 ... 3 (see table).
- Rated burden:** max. 30 VA (see table).
- Rated voltage:** 720 V.
- Rated frequency:** 50-60 Hz.
- Rated sec. current:** 5 A (or 1 A on request).
- Working temperature range:** -20 ... +45°C.
- High voltage test:** 4 kV_{eff}, 50 Hz, 1 min.
- Insulation class:** E (max. 120°C)
- Protection:** IP 00.
- Case:** non-flammable plastic, UL 94 V-0.



Rated primary current I_n	Ac. cl.	Type: SCT 140/80					
		Busbar hole 81x51 mm (see fig.)					
		Rated burden (VA)					
		1,5	2,5	3,75	5	7.5	10
400 A	1	x					
	3				x		
500 A	1		x				
	3				x		
600 A	1			x			
	3					x	
750 A	1				x	x	
	3						x
800 A	1				x	x	
	3						x

Rated primary current I_n	Ac. cl.	Type: SCT 140/80				
		Busbar hole 81x51 mm (see fig.)				
		Rated burden (VA)				
		5	10	15	20	30
1000 A	1	x	x			
	3				x	
1200 A	1	x	x	x		
	3				x	
1250 A	1	x	x	x		
	3				x	
1500 A	1		x	x	x	
	3					x
1600 A	1	x	x	x	x	
	3					x

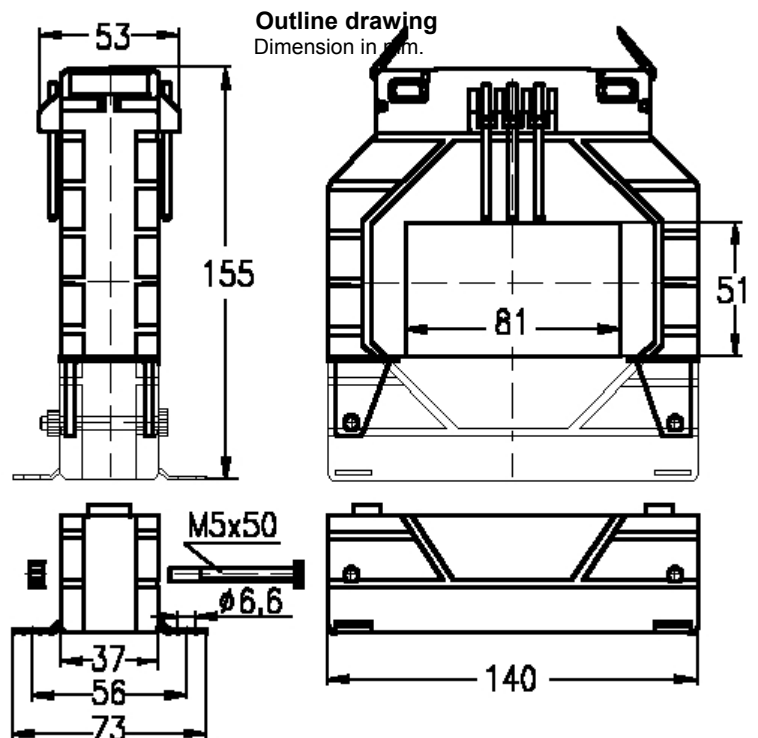
Order specification:

- Split core-type current transformer
- Class of accuracy: 1
- Rated primary current: 1600 A.
- Rated secondary current: 5 A.
- Rated burden: 15 VA
- Busbar dimension: 81 x 51 mm

SCT 140/80 1600/5 A Cl. 1 15VA

Note:

On request orders for types different from table are accepted



Weight: 900...1100gr