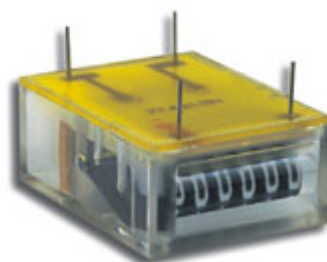








MC 703, MC 723
pulse counters


Type:	totalizing counters without reset
Supply voltage DC:	3V, 5V, 12V, 24V (± 10%)
Display:	6-digit or 7-digit
Counting range:	999999 or 9999999
Power consumption:	ca. 300 mW at 3 and 5VDC ca. 500 mW at 12 and 24VDC
Max. counting speed:	10 pulses/sec.
Duration of operation:	100%
Operating temperature:	-10°C...+60°C
Protection:	IP 31 - version C and D IP 65 - version A and B
Connection:	wire lead 140 mm or soldering pins $\varnothing 0,6$ mm

Versions & mountings:

	TYPE		FRONT DIMENSIONS	CUTOUT
	MC 703.xxA	Front reading, 4 pins on the top, PCB mount	25.2x13.5 mm	-
	MC 703.xxB	Top reading, 4 pins on the bottom, PCB mount	25.2 x 31 mm	-
	MC 703.xxC	Front reading, 2 pins behind, rear screw mount	25.2x13.8 mm	25,2 x 13,8 mm
	MC 703.xxD	Front reading, wire lead behind, rear screw mount	25.2x13.8 mm	25,2 x 13,8 mm
	MC 723.xxC	Front reading, 2 pins behind, snap fastener mount	30 x 20 mm	26,5 x 13,8 mm
	MC 723.xxD	Front reading, wire lead behind, snap fastener mount	30 x 20 mm	26,5 x 13,8 mm