



## 48sdD

For measuring DC current or voltage on two separate networks simultaneously.

### Technical data:

- Movement:** moving-coil with pivot and spring-type bearing
- Instrument case:** steel-plate
- Frame dimension:** 48x48 mm
- Scale length:** 29 mm and 31 mm
- Permanent overloading:** 1.2 -fold current res. voltage
- Class of accuracy:** 2.5
- Protection:** casing IP50; terminals IP00 in accordance with DIN 40050
- Weight:** 0.25 kg
- Fixing elements:** with two screw-type fastening clips (DIN 43835 "B")



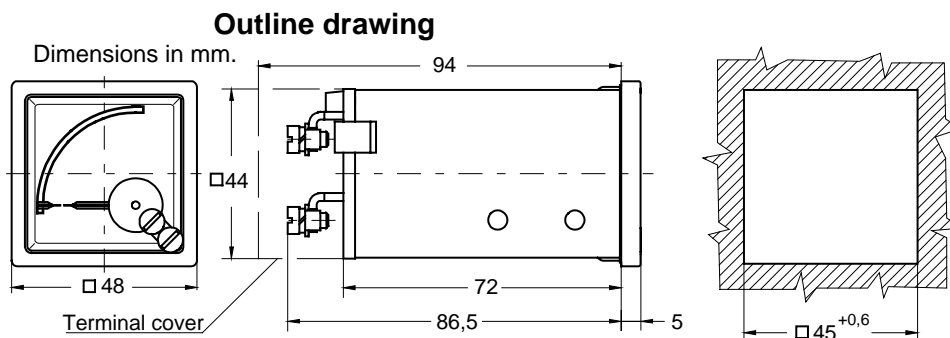
**IMPORTANT:** the ranges of the two movements are independent from each other.

**Current ranges:** +/- 50  $\mu$ A ... 1A

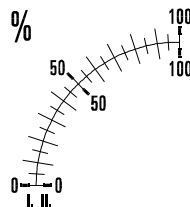
**Voltage ranges:** +/- 50 mV ... 300V

The tolerance of the internal resistance is generally  $\pm 20\%$ .

Scales for instruments as requested.



Scale M=1:1



### Order specification:

- Moving-coil instrument with double movement
- Frame size: 48x48 mm
- Range: I. 50...0...50  $\mu$ A  
II. 0 ... 500  $\mu$ A
- Scale I. 20 ... 0 ... 20%  
II. 0 ... 100%

### Ordering data:

- Moving-coil instrument with double movement.
- Type: **48sdD**
- Range: I. 50...0...50  $\mu$ A  
II. 0 ... 500  $\mu$ A
- Scale I. 20 ... 0 ... 20%  
II. 0 ... 100%