



PHASE SEQUENCE INDICATOR



96FS

For indicating the phase sequence in a three-phase system

Technical data:

Direction indicator: Light emitting diode (LED)

Instrument case: steel-plate

Operation frequency: 45-55 Hz

Rated voltage: 100-250 V or 200-600 V

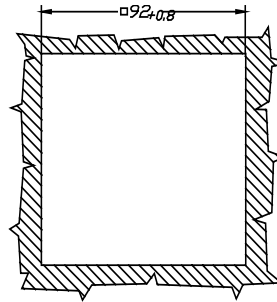
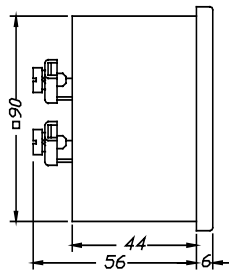
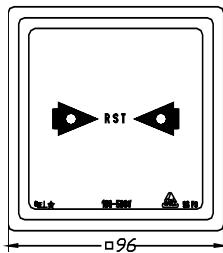
Consumption: approx. 1.7 VA at 400 V

Weight: approx. 0.3 kg

Fixing elements: with two spring-type fastening clips (DIN 43835 "A")



Type	96 FS
Measuring range	Cat. No. 2032-99-...
100-250 V	001
200-600 V	002



Order specification:

- Phase sequence indicator
- Operation frequency: 45-55 Hz
- Rated voltage: 200-600 V

Ordering data:

- Phase sequence indicator
- Type: **96FS**
- Cat. No.: **2032-99-002**



ZERO VOLTMETER



96LV0, 144LV0

The instruments are used as synchronoscope. At equal voltage and frequency the instrument will indicate zero when the two circuits are in phase.

Technical data:

Movement: moving-iron movement with spring-type oilfilled bearing, vibration-free oil damping

Instrument case: steel-plate

Overload: 200 % of rated voltage

Class of accuracy: 1.5

Operation frequency: 15...50...100 Hz

Consumption: approx. 3 VA at middle scale pointer position

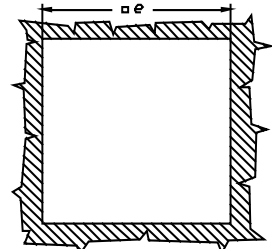
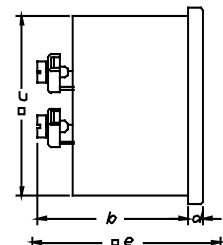
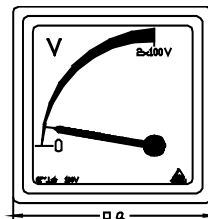
Weight: approx. 0.35 kg (96LV0), 0.8 kg (144LV0)

Fixing elements: with two spring-type fastening clips (DIN 43835 "A")

Note: scale enlargement near zero indication



Frame dimension		96x96 mm	144x144 mm
Rated voltage	Type	96 LV0	144 LV0
	Cat. No.	2010-13-...	2011-13-...
Full scale indication			
100:√3 V	001		115 V
100 V	002		200 V
110:√3 V	003		127 V
115 V	004		230 V
230 V	005		460 V
400 V	006		800 V
440 V	007		880 V



Type	Dimensions in mm				
	a	b	c	d	e
96LV0	96	62	90	5.5	92 ^{+0.8}
144LV0	144	85	136	9.5	138 ^{+1.0}

- Order specification:**
- Zero voltmeter
 - Frame dimension: 144x144 mm
 - Rated voltage: 400 V

- Ordering data:**
- Zero voltmeter
 - Type: 144 LV0
 - Cat. No.: **2011-13-006**