



MAXIMUM DEMAND AMMETERS



48B, 48BL, 72B, 72BL, 96B, 96BL

For measuring the maximum current in period of 8 or 15 min. The red slave maximum pointer remains always at the maximum. The pointer can be resetted by the white reset knob on the front. The 72 and 96 mm sized instruments have interchangeable scales.

Technical data:

Ranges:
 1A + 20% = 1.2A (bimetal)
 5A + 20% = 6A (bimetal)
 1A + 100% overload – moving iron
 5A + 100% overload – moving iron

Class of accuracy: ±3 % for bimetal (B)
 ±1.5 % for moving-iron (BL)

Case:
 - steel plate, black colour
 - plastic, non flammable, UL 94-V1



Fixing elements: 48 mm and 72 m instruments with two spring type fastening clips (DIN 43835A)
 96 mm with two screw type fastening clips

Type >	48B	48BL	72B	72BL	96B	96BL
Frame dimensions (mm)	48x48	48x48	72x72	72x72	96x96	96x96
Scale length (mm)	35	27	60	60(B), 42(L)	95	95(B), 72(L)
Weight (kg)	0,15	0,2	0,3	0,35	0,25	0,3
case	metal			plastic		
Ranges	.../5A* or .../1A* (with 20% overload)					
Response time	8 or 15 min					
Consumption (VA)	2,5	3	2,5	3	2,5	3
Scale end range	bimetall (B)	120%	120%	120%	120%	120%
	moving-iron(L)	-	200%	-	200%	200%

* For current transformer connection

Note: On request orders for types different from table are accepted

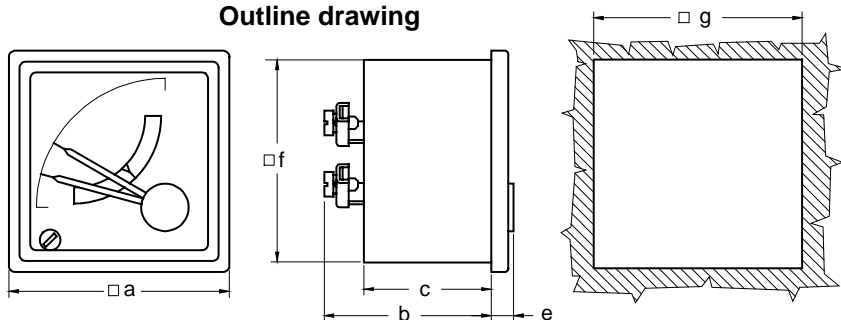
Scales for CT use		
Primary current of the CT		
10 A	125 A	1200 A
15 A	150 A	1250 A
20 A	200 A	1500 A
25 A	250 A	1600 A
30 A	300 A	2000 A
40 A	400 A	2500 A
50 A	500 A	3000 A
60 A	600 A	4000 A
75 A	750 A	5000 A
80 A	800 A	6000 A
100 A	1000 A	8000 A



MAXIMUM DEMAND AMMETERS



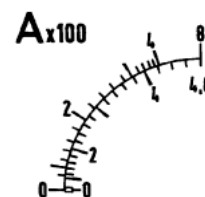
Outline drawing



Scale 48B

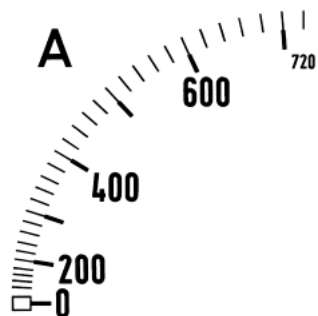


Scale 48BL

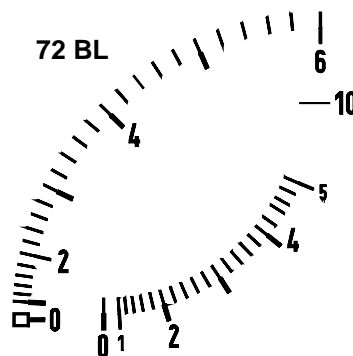


Type	Dimensions mm					
	a	b	c	e	f	g
48B	48	67	53	5,5	44	45 ^{+0.6}
48BL	48	98	83	5,5	44	45 ^{+0.6}
72B, 72BL	72	64	51	6	66	68 ^{+0.7}
96B, 96BL	96	52	37	5,5	90	92 ^{+0.8}

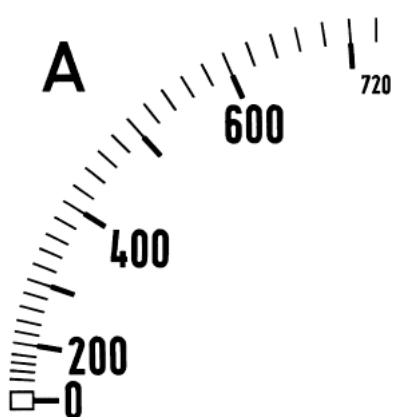
72B



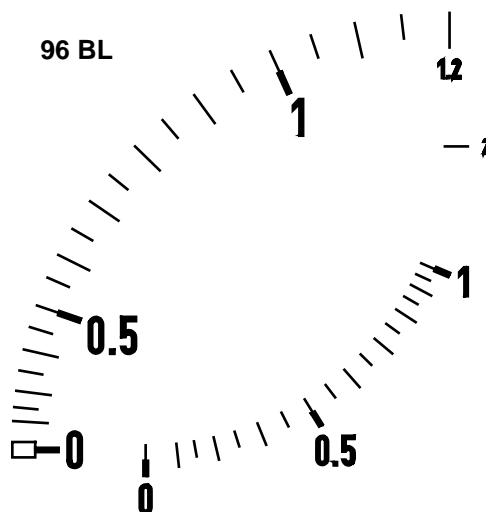
72 BL



96B



96 BL



Order specification:

- Bimetal + moving-iron movement instrument.
- Frame dimensions: 96x96 mm
- Range: 6 A
- Response time: 15 min
- CT: 400/5A

Ordering data:

- Bimetal + moving-iron movement instrument.
- type: 96BL
- Range: 6 A
- Response time: 15 min
- CT: 400/5A, scale: 0-400/480A