



MOVING-COIL PROFILE INSTRUMENTS



72spDA, 96spDA, 144spDA 72spDV, 96spDV, 144spDV

For measuring DC current or voltage

Technical data:

Movement: moving-coil
pivot and spring-type bearing

Instrument case: steel plate

Scale length: 46mm (72sp); 62mm (96sp);
103mm (144sp)

Permanent overloading: 1.2 -fold current
res. voltage

Class of accuracy: 1.5



Weight: approx. 0.1kg (72sp); 0.35kg (96sp); 0.8kg (144sp)

Fixing elements: two spring-type fastening clips (DIN 43 835 "A") for 72sp and 96sp;
and two screw-type fastening clips (DIN 43 835 "B") for 144sp

AMMETERS	Type 72 spDA		Type 96 spDA		Type 144 spDA	
	72x36 mm		96x48 mm		144x72 mm	
	Cat. No. 1051-12-...	Int. Res. (Ω)	Cat. No. 1526-12-...	Int. Res. (Ω)	Cat. No. 2304-12-...	Int. Res. (Ω)
100 μA	002	870	001	870	001	4000
250 μA	004	450	005	450	005	1300
500 μA			008	80	008	310
1 mA	007	30	011	30	011	110
5 mA	011	2.5	018	2.5	018	3.5
10 mA	013	2.2	021	2.2	003	6
20 mA	015	2	024	2	006	1.5
25 mA	016	2.4	025	2.4	007	2.4
100 mA	019	0.6	031	0.6	013	0.6
0.5 A			038	0.12	001	0.12
1 A	024	0.06	041	0.06	004	0.06
1.5 A	025	0.04	043	0.04	006	0.04
2.5 A	026	0.024	045	0.024	008	0.024
4 A	027	0.015	047	0.015	010	0.015
5 A			048	0.012	011	0.012
6 A	028	0.01	049	0.01	012	0.01
10 A	029	0.006	052	0.006	052	0.006
4...20 mA	501	2	501	2	501	2
*...A/50mV	1051-12-C01	10	1526-12-C01	10	1526-12-C01	10
*...A/60mV	1051-12-C02	12	1526-12-C02	12	1526-12-C02	12
*...A/100mV	1051-12-C03	20	1526-12-C03	20	1526-12-C03	20
*...A/150mV	1051-12-C04	30	1526-12-C04	30	1526-12-C04	30
*...A/300mV	1051-12-C05	60	1526-12-C05	60	1526-12-C05	60

* For connection to separate shunt. The calibration of the instruments 0.035 Ω
wire (=2x1 m \varnothing 1 mm²) resistance is taken into consideration.

The tolerance of the internal resistance is generally ±20%

Note: on request types different from tables are accepted

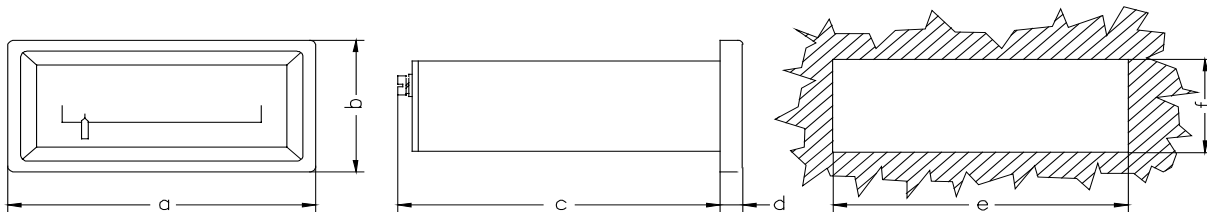


MOVING-COIL PROFILE INSTRUMENTS



VOLTMETERS	Type 72 spDV		Type 96 spDV		Type 144 spDV	
Frame dimensions	72x36 mm		96x48 mm		144x72 mm	
Measuring range	Cat. No. 1051-12-...	Intern. Resist.	Cat. No. 1526-12-...	Intern. Resist.	Cat. No. 2304-12-...	Intern. Resist.
1 V	037	1000 Ω/V	051	1000 Ω/V	001	1000 Ω/V
1.5 V	038	↓	053		003	
2 V	---		054		004	
2.5 V	039		055		005	
4 V	040		057		007	
5 V	---		058		008	
6 V	041		059		009	
10 V	042		061		011	
15 V	043		063		013	
20 V	---		064		014	
25 V	044		065		015	
30 V	---		066		016	
40 V	045		067		017	
50 V	---		068		018	
60 V	046		069		019	
80 V	---		070		020	
100 V	047		071		021	
150 V	048		073		023	
200 V	---		074		024	
250 V	049		075		025	
300 V	---		076		026	
400 V	050		077		027	
500 V	---		078		028	
600 V	051		079		029	

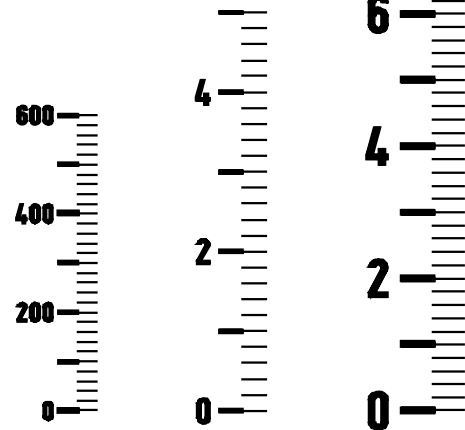
Note: on request types different from tables are accepted



Type\Dim. [mm]	a	b	c	d	e	f
72 spDA 72 spDV	72	36	105	5.5	68 ^{+0.7}	33 ^{+0.7}
96 spDA 96 spDV	96	48	125	7	92 ^{+0.7}	44 ^{+0.7}
144 spDA 144 spDV	144	72	170	8	138 ^{+0.7}	68 ^{+0.7}



Scales (M=1:1)



72spD

96spD

144spD

Order specification:

- Moving-coil voltmeter
- Frame size: 72x36 mm
- Range: 10 V
- Scale: 0 ... 10 V

Ordering data:

- Moving-coil voltmeter
- Type: 72 spDV
- Cat. No. 1051-12-042
- position: horizontal